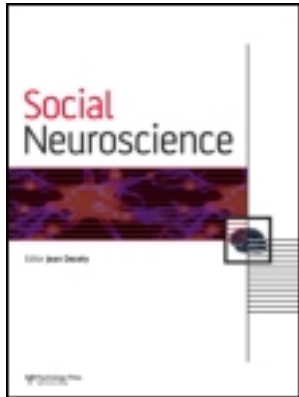


This article was downloaded by: [Peking University]

On: 04 April 2013, At: 15:59

Publisher: Routledge

Informa Ltd Registered in England and Wales Registered Number: 1072954 Registered office: Mortimer House, 37-41 Mortimer Street, London W1T 3JH, UK



Social Neuroscience

Publication details, including instructions for authors and subscription information:

<http://www.tandfonline.com/loi/psns20>

Accessible cultural mind-set modulates default mode activity: Evidence for the culturally situated brain

Chenbo Wang^{a b}, Daphna Oyserman^c, Qiang Liu^d, Hong Li^d & Shihui Han^{a b}

^a Department of Psychology, Peking University, Beijing, China

^b PKU-IDG/McGovern Institute for Brain Research, Peking University, Beijing, China

^c Institute for Social Research, University of Michigan, Ann Arbor, MI, USA

^d School of Psychology, Liaoning Normal University, Dalian, China

Version of record first published: 13 Mar 2013.

To cite this article: Chenbo Wang, Daphna Oyserman, Qiang Liu, Hong Li & Shihui Han (2013): Accessible cultural mind-set modulates default mode activity: Evidence for the culturally situated brain, *Social Neuroscience*, 8:3, 203-216

To link to this article: <http://dx.doi.org/10.1080/17470919.2013.775966>

PLEASE SCROLL DOWN FOR ARTICLE

Full terms and conditions of use: <http://www.tandfonline.com/page/terms-and-conditions>

This article may be used for research, teaching, and private study purposes. Any substantial or systematic reproduction, redistribution, reselling, loan, sub-licensing, systematic supply, or distribution in any form to anyone is expressly forbidden.

The publisher does not give any warranty express or implied or make any representation that the contents will be complete or accurate or up to date. The accuracy of any instructions, formulae, and drug doses should be independently verified with primary sources. The publisher shall not be liable for any loss, actions, claims, proceedings, demand, or costs or damages whatsoever or howsoever caused arising directly or indirectly in connection with or arising out of the use of this material.

m₁ m₂ m₃ m₄ m₅ m₆ m₇ m₈ m₉ m₁₀ m₁₁ m₁₂ m₁₃ m₁₄ m₁₅ m₁₆ m₁₇ m₁₈ m₁₉ m₂₀ m₂₁ m₂₂ m₂₃ m₂₄ m₂₅ m₂₆ m₂₇ m₂₈ m₂₉ m₃₀ m₃₁ m₃₂ m₃₃ m₃₄ m₃₅ m₃₆ m₃₇ m₃₈ m₃₉ m₄₀ m₄₁ m₄₂ m₄₃ m₄₄ m₄₅ m₄₆ m₄₇ m₄₈ m₄₉ m₅₀ m₅₁ m₅₂ m₅₃ m₅₄ m₅₅ m₅₆ m₅₇ m₅₈ m₅₉ m₆₀ m₆₁ m₆₂ m₆₃ m₆₄ m₆₅ m₆₆ m₆₇ m₆₈ m₆₉ m₇₀ m₇₁ m₇₂ m₇₃ m₇₄ m₇₅ m₇₆ m₇₇ m₇₈ m₇₉ m₈₀ m₈₁ m₈₂ m₈₃ m₈₄ m₈₅ m₈₆ m₈₇ m₈₈ m₈₉ m₉₀ m₉₁ m₉₂ m₉₃ m₉₄ m₉₅ m₉₆ m₉₇ m₉₈ m₉₉ m₁₀₀

10/10/2014 11:54:11 AM

10/10/2014 11:54:11 AM **m** 10/10/2014 11:54:11 AM

TABLE 3
Differences in brain activations between priming conditions

<i>B</i>	<i>I</i>		
	<i>BA</i>	()	-
\gt			
<i>m</i>	-		
<i>m</i>	-		
<i>m</i>	\	-	-
<i>m</i>	\	-	-
\gt			
<i>m</i>	-		
<i>m</i>	-		
	-/	-	
		-	

...

TABLE 4
Brain activation correlated with independent self-construal score

<i>C</i>	()	<i>I</i>	<i>I</i>	<i>C</i>

...

Regional homogeneity during the resting state

...

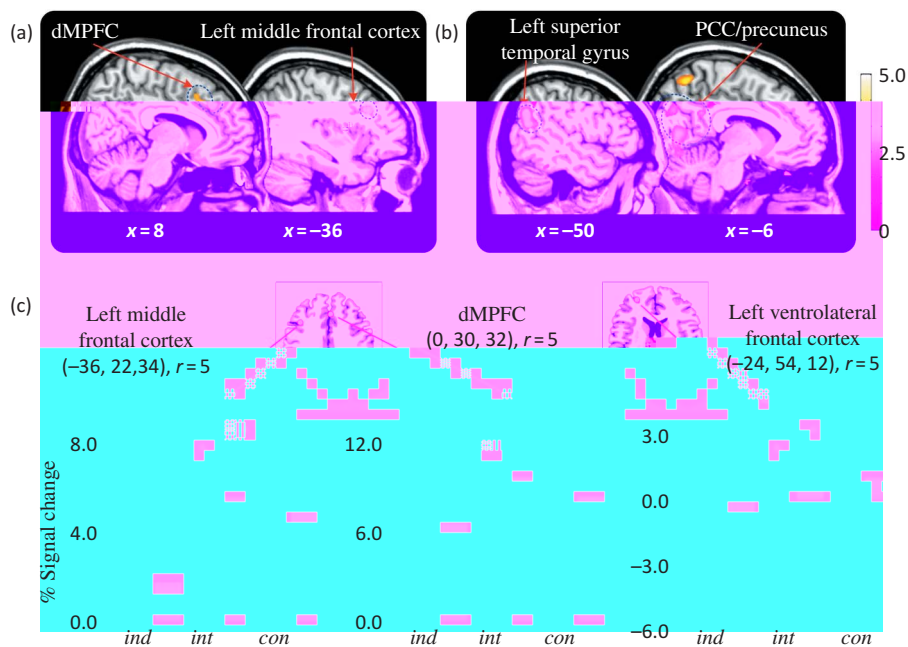


Figure 4.

Functional connectivity during the resting state

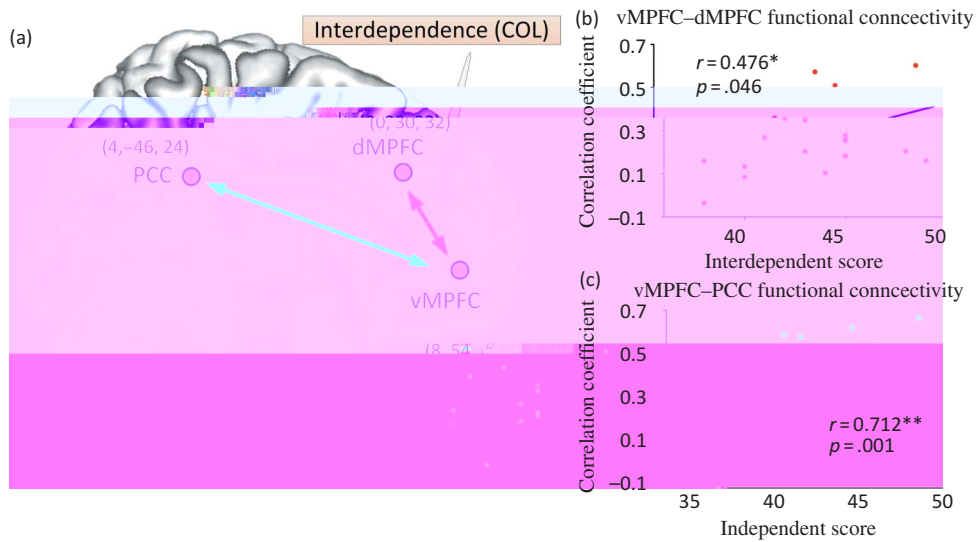


Figure 6. Functional connectivity between PCC, dMPFC, and vMPFC. (a) 3D brain model showing Interdependence (COL) scores and functional connectivity between PCC (4, -46, 24), dMPFC (0, 30, 32), and vMPFC (8, 54, 16). (b) Scatter plot of vMPFC-dMPFC functional connectivity (r=0.476*, p=.046) vs Interdependent score. (c) Scatter plot of vMPFC-PCC functional connectivity (r=0.712**, p=.001) vs Independent score.

DISCUSSION

The present study investigated the functional connectivity between PCC, dMPFC, and vMPFC in relation to interdependence and independence scores. The results show that vMPFC-dMPFC functional connectivity is positively correlated with interdependent scores, while vMPFC-PCC functional connectivity is positively correlated with independent scores. These findings suggest that the PCC and vMPFC are more involved in independent thinking, while the dMPFC and vMPFC are more involved in interdependent thinking.

3

9

A 64

5

27

A

55

B 125

C

14

A

62

302

E

38

E A 62

B 77

C

22

171

C

A

B

134

98

5

A

A 99

A

13

C -C

40

C -C

42

I 31

31

E 22

B 128

B

134

H

97

A 98

m m
 m m
 m
 m m
 B 20
 m
 m m
 C
 23
 m m
 18
 m m
 C A

m m
 4
 m
 7
 m
 m 4
 m
 I 22
 I
 34
 m
 I 48